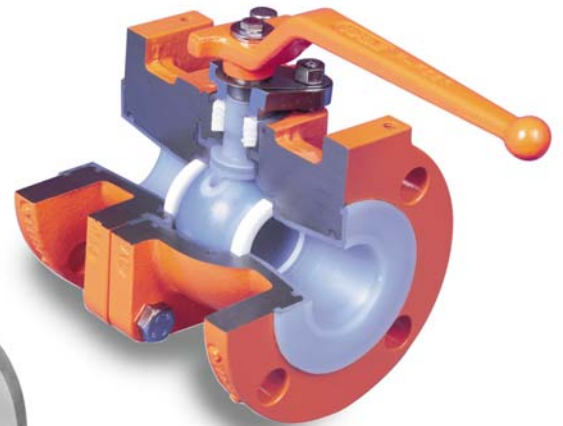
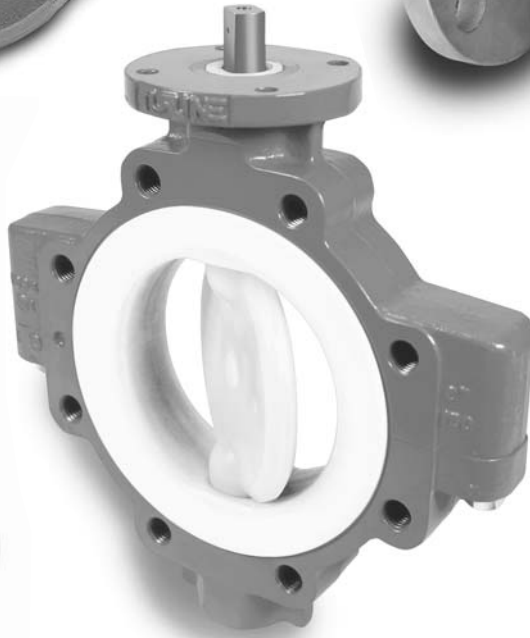
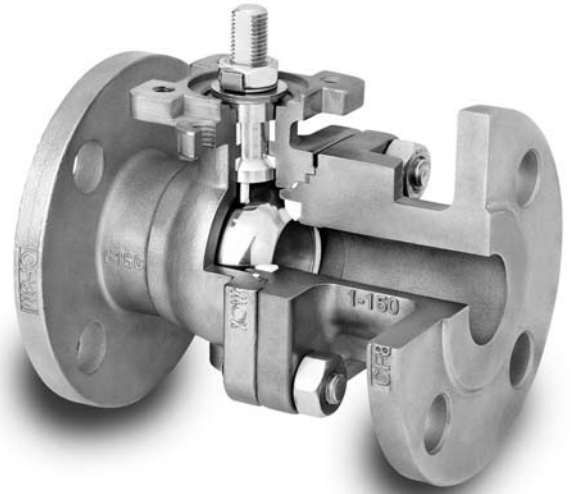


Application & Corrosion Data



XOMOX[®]
Process Valves & Actuators

Corrosion Ratings:

A - Excellent

B - Good

C - Fair

D - Not Recommended

Blank - Insufficient Data

	Aluminum	Ductile Iron	Bronze	Carbon Steel	S.S. 304	S.S. 316	S.S. 17-4 PH	Alloy 20	Monel	Nickel	Hastelloy (B) (C)	FEP / PFA / PTFE
Acetaldehyde	B	C	D	C	A	A	A	A	A	A	A	A
Acetate Solvents	A	B	A	A	A	A	A	A	A	A		A
Acetic Acid (Aerated 0 to 50%)	C	D	D	D	B	A	A	A	C	D	A	A
Acetic Acid (Air Free 0 to 50%)	A	D	B	D	C	A	A	A	C	D	A	A
Acetic Acid (Aerated 55 to 100%)	B	D	D	D	A	B	B	A	D	D	A	A
Acetic Acid (Air Free to 55 to 100%)	A	D	B	D	B	B	B	A	B	B	A	A
Acetic Anhydride	B	D	C	D	B	B	B	B	B	B	A	A
Acetone	B	B	B	B	B	B	B	B	A	A	A	A
Acetylene (Dry Only)	A	A	B	A	A	A	A	A	A		A	A
Acrylonitrile	B	C	A	A	A	A	A	A	A			A
Alcohols - Methyl, Ethyl	B	B	B	B	A	A	A	A	A		A	A
Alcohol - Amyl	A	B	B	B	A	A	B	A	A	A	A	A
Alcohol - Butyl	A	B	B	B	A	A	B	A	A	A	A	A
Aluminum Chloride (Dry)	D	D	D	D	C	C	D	B	C	C	A ^(B)	A
Aluminum Sulfate (Alums)	B	C	C	C	B	A	C	A	A	B	B	A
Alums	B	C	C	C	B	A	C	A			B	A
Amines	A	A	A	A	A	A	A	A	A	A		A
Ammonia, Anhydrous	B	B	D	A	A	A	A	A	B	A	B	A
Ammonia (Aqueous)	B	A	D	A	A	A	A	A	B	A	B	A
Ammonia Solutions	D	B	D	B	A	A	A	A	B			A
Ammonium Bicarbonate	B	B	B	C	B	B	B	B	B			A
Ammonium Carbonate	B	B	D	B	B	B	B	B	B	B	B	A
Ammonium Chloride	C	D	D	D	B	B	D	B	B	B	A	A
Ammonium Hydroxide (28%)	C	C	D	C	B	B	B	B	D	D	A	A
Ammonium Hydroxide (Conc.)	C	C	D	C	B	B	B	B	D	D	A	A
Ammonium Monophosphate	B	D	D	D	B	B	B	B	C		A	A
Ammonium Nitrate	B	D	D	D	A	A	A	A	D	D	B ^(C)	A
Ammonium Phosphate (Dibasic)	B	D	C	D	B	B	B	B	C		B	A
Ammonium Phosphate (Tribasic)	B	D	C	D	B	B	B	B	C		B	A
Ammonium Sulfate	C	C	B	C	B	B	B	B	C	B	B ^(C)	A
Amyl Acetate	B	C	B	C	A	A	A	A	A	A	A	A
Aniline	C	C	C	C	B	B	B	B	B	B	B	A
Aniline Dyes	C	C	C	C	A	A	A	A	A			A
Antimony Trichloride	D	D	D	D	D	D	D	C	B	B	B	A
Apple Juice	B	D	C	D	B	B	B	A	A			A
Arsenic Acid	D	D	D	D	B	B	B	B	D			A
Asphalt Emulsion	C	A	A	A	A	A	A	A	A	A		A
Asphalt Liquid	C	A	A	A	A	A	A	A	A	A		A
Barium Carbonate	B	B	B	B	B	B	B	B	B	B	B	A
Barium Chloride	D	C	B	C	C	C	C	C	B	A	A	A

Corrosion Ratings:

A - Excellent

B - Good

C - Fair

D - Not Recommended

Blank - Insufficient Data

	Aluminum	Ductile Iron	Bronze	Carbon Steel	S.S. 304	S.S. 316	S.S. 17-4 PH	Alloy 20	Monel	Nickel	Hastelloy (B) (C)	FEP / PFA / PTFE
Barium Hydroxide	D	B	B	C	B	A	B	A	B	A	B	A
Barium Sulfate	D	C	C	C	B	B	B	B	B	B		A
Barium Sulfide	D	C	C	C	B	B	B	B	C	A		A
Beer (Alcohol Industry)	A	C	B	C	A	A	A	A	A	A	A	A
Beet Sugar Liquors	A	B	A	B	A	A	A	A	A	A		A
Benzene (Benzol)	B	B	B	B	B	B	A	A	A	A	B	A
Benzaldehyde	B	D	B	D	B	B	B	B	B	B	B	A
Benzoic Acid	B	D	B	D	B	B	B	B	B	B	A	A
Borax Liquors	C	C	B	C	B	B	B	B	B	B	A	A
Boric Acid	B	D	B	D	A	B	B	B	B	B	A	A
Brines	B	C	B	C	B	B	C	B	A			A
Bromine (Dry)	C	D	D	D	D	D	D	D	A	A	A ^(C)	A
Bromine (Wet)	D	D	D	D	D	D	D	D	D	C	A ^(C)	A
Bunker Oils (Fuel Oils)	A	B	B	B	A	A	A	A	A		A	A
Butadiene	A	B	C	B	A	A	A	A	C			A
Butane	A	B	A	B	A	A	A	A	A		A	A
Butylene	A	A	A	A	A	A	A	A	A			A
Buttermilk	A	D	D	D	A	A	A	A	D	A	A	A
Butyric Acid	B	D	C	D	B	B	B	B	C	C	A	A
Calcium Bisulfite	C	D	B	D	C	B	B	B	D	D	B	A
Calcium Carbonate	C	D	C	D	B	B	B	B	B	B	B	A
Calcium Chloride	C	C	B	C	C	B	B	B	A	A	A	A
Calcium Hydroxide	C	C	B	C	B	B	B	B	B	B		A
Calcium Hypochlorite	C	D	D	D	C	C	C	C	C	D	B	A
Calcium Sulfate	B	C	C	C	B	B	B	B	B		B	A
Carbolic Acid	A	D	A	D	B	B	B	B	B	A	A	A
Carbon Bisulfide	A	B	C	B	B	B	B	B	B	B	B	A
Carbon Dioxide (Dry)	A	B	A	A	A	A	A	A	A	A		A
Carbonic Acid	B	D	D	D	B	B	B	B	B	B	A	A
Carbon Tetrachloride (Dry)	C	C	C	C	B	B	B	B	A	A	B	A
Carbon Tetrachloride (Wet)	C	D	D	D	B	B	B	B	B	A		A
China Wood Oil (Tung)	A	C	C	C	A	A	A	A	A	A		A
Chlorinated Solvents (Dry)	D	C	C	C	B	B	B	B	B			A
Chlorine Gas (Dry)	D	D	C	D	B	B	C	B	B	B	B ^(C)	A
Chlorine (Wet)	D	D	D	D	D	D	D	D	B			A
Chloroacetic Acid	C	D	C	D	C	C	C	C	B	A	A ^(C)	A
Chlorobenzene (Dry)	B	B	B	B	B	B	B	B	B	B	B	A
Chloroform (Dry)	D	B	B	B	A	A	A	A	A	A	A	A
Chlorosulphonic Acid (Dry)	B	B	B	B	B	B	B	B	B	B	A	A
Chlorosulphonic Acid (Wet)	D	D	D	D	D	D	D	D	C			A

Corrosion Ratings:

A - Excellent

B - Good

C - Fair

D - Not Recommended

Blank - Insufficient Data

	Aluminum	Ductile Iron	Bronze	Carbon Steel	S.S. 304	S.S. 316	S.S. 17-4 PH	Alloy 20	Monel	Nickel	Hastelloy (B) (C)	FEP / PFA / PTFE
Chrome Alum	C	B	C	B	A	A	A	A	B			A
Chromic Acid	C	D	D	D	C	C	C	B	D	D	B	A
Citrus Juices	C	D	B	D	B	B	A	A	B	B	A	A
Coconut Oil	B	C	B	C	B	B	B	B	B			A
Coffee Extracts (Hot)	A	C	B	C	A	A	A	A	A	A		A
Coke Oven Gas	A	B	C	B	A	A	A	A	B			A
Copper Acetate	C	D	D	D	B	B	B	B	C	B	B	A
Copper Chloride	D	D	D	D	D	D	D	D	C	D	B ^(C)	A
Copper Nitrate	C	D	D	D	B	B	B	B	D	D	B	A
Copper Sulfate	C	D	D	D	B	B	A	A	B	B	A ^(C)	A
Corn Oil	B	C	B	C	A	B	B	B	B		B	A
Creosote Oil	B	B	B	B	B	B	B	A	B	B	B	A
Cresylic Acid	C	D	C	C	B	B	B	B	B	B	B	A
Crude Oil, Sweet	A	B	B	B	A	A	A	A	A			A
Crude Oil, Sour	A	C	C	B	A	A	A	A	A			A
Cutting Oils, Water Emulsions	A	B	A	B	A	A	A	A				A
Cyclohexane	A	A	A	A	A	A	A	A	A			A
Diacetone Alcohol	A											A
Diethylamine	A	A	D	A	A	A	A	A	A			A
Dowtherms	A	B	A	B	A	A	A	A	A			A
Drilling Mud	B	B	B	B	A	A	A	A	A			A
Drip Cocks, Gas	B	B	B	B	A	A	A	A	A			A
Dry Cleaning Fluids	A	B	C	B	A	A	A	A	B			A
Drying Oil	C	B	C	C	B	B	B	B	B		B	A
Epsom Salt	A	C	B	C	B	B	B	B	B			A
Ethane	A	A	A	A	A	A	A	A	A			A
Ethers	B	B	B	A	A	A	A	A	B	B	B	
Ethyl Acetate	A	C	C	B	B	B	A	B	B	B	B	A
Ethyl Acrylate				A			A					A
Ethyl Chloride (Dry)	B	B	B	B	A	A	A	A	B	A	B	A
Ethyl Chloride & Ethyl Fluoride (Wet)	D	D	C	D	C	C	B	A	B		B	
Ethylene Glycol	A	B	B	B	B	B	B	B	B		B	A
Ethylene Oxide	A	B	D	B	B	B	B	B	B	B	A	A
Fatty Acids	B	D	B	D	B	A	B	A	B	B	A	A
Ferric Chloride	D	D	D	D	D	D	D	D	D	D	B	A
Ferric Nitrate	D	D	D	D	B	B	C	A	D	D	B	A
Ferric Sulfate	D	D	D	D	B	A	B	A	D	D	B	A
Ferrous Chloride	D	D	B	C	D	D	D	C	C	D	B	A
Ferrous Sulfate	D	D	B	D	B	A	B	A	D	D	B	A
Fertilizer Solutions	B	C	C	B	B	B	B	B	B			A

Corrosion Ratings:

A - Excellent

B - Good

C - Fair

D - Not Recommended

Blank - Insufficient Data

	Aluminum	Ductile Iron	Bronze	Carbon Steel	S.S. 304	S.S. 316	S.S. 17-4 PH	Alloy 20	Monel	Nickel	Hastelloy (B) (C)	FEP / PFA / PTFE
Fluorine (Dry)	B	B	B	B	B	B	B	B	B	A		A
Fluorosilicic Acid	D	D	A	D	B	B	C	B	A	B	B	A
Food Fluids and Pastes	A	C	B	C	A	A	A	A	A			A
Formaldehyde (Cold)	A	B	A	B	B	A	A	A	B	B	B	A
Formaldehyde (Hot)	B	D	B	D	B	B	B	A	B	B	B	A
Formic Acid (Cold)	D	D	B	D	C	A	B	A	B	B	A	A
Formic Acid (Hot)	D	D	B	D	C	B	D	B	B	B	A	A
Freon (Dry)	B	B	B	B	A	A	B	A	A	A		A
Fruit Juices	B	D	B	D	A	A	A	A	A	A	A	A
Furfural	B	B	B	B	A	A	B	A	B	B	B	A
Gallic Acid	B	D	C	D	B	B	B	B	B	B	B	A
Gas, Manufactured	B	B	B	B	B	B	B	B	A	A		A
Gas, Natural	B	B	B	B	A	A	A	A	A	A		A
Gas Odorizers	A	B	A	B	B	B	B	B	B			A
Gasoline	A	B	A	A	A	A	A	A	A	A	A	A
Gasoline (Sour)	A	B	B	B	A	A	A	A	A	D		A
Gelatin	A	D	A	D	A	A	A	A	A	A		A
Glucose	A	B	A	B	A	A	A	A	A			A
Glue	A	A	B	A	A	A	A	A	A		A	A
Glycerine or Glycerol	A	B	B	B	A	A	A	A	B	A	A	A
Glycols	B	B	B	B	B	B	B	A	B			A
Grease	A	A	B	A	A	A	A	A	B			A
Heptane	A	B	A	B	A	A	A	B	B		A	A
Hexane	A	B	B	B	B	B	A	B	B			A
Hexanol, Tertiary	A	A	A	A	A	A	A	A	A			A
Hydraulic Oil, Petroleum Base	A	B	B	A	A	A	A	A	A			A
Hydrobromic Acid	D	D	D	D	D	D	D	D	D	D	B	A
Hydrochloric Acid (Air Free)	D	D	D	D	D	D	D	D	B	B	A ^(B)	A
Hydrocyanic Acid	B	C	D	C	B	B	B	A	B	B	B	A
Hydrofluoric Acid	D	D	D	D	D	D	D	C	B	B	B ^(C)	A
Hydrogen Gas (Cold)	A	B	B	B	A	A	A	A	A	A		A
Hydrogen Peroxide (Dilute)	A	D	B	D	B	B	B	B	B	B	B	A
Hydrogen Peroxide (Conc.)	A	D	D	D	B	B	B	B	B	B	B	A
Hydrogen Sulfide (Dry)	B	B	C	B	B	A	B	A	B	B	B	A
Hydrogen Sulfide (Wet)	C	D	D	C	B	B	D	B	B	B	B	A
Hydrofluosilicic Acid	D	D	A	D	C	C	C	B	B			A
Hypo (Sodium Thiosulfate)	A	C	C	D	B	B	B	B	B	B		A
Hypochlorites, Sodium	C	D	D	D	C	C	C	C	B	D	A ^(C)	A
Ink	B	D	C	D	B	A	A	A	B	A	B	A
Iodine (Wet)	D	D	D	D	D	D	D	D	D	C	B ^(C)	A

Corrosion Ratings:

A - Excellent

B - Good

C - Fair

D - Not Recommended

Blank - Insufficient Data

	Aluminum	Ductile Iron	Bronze	Carbon Steel	S.S. 304	S.S. 316	S.S. 17-4 PH	Alloy 20	Monel	Nickel	Hastelloy (B) (C)	FEP / PFA / PTFE
Iodoform	B	C	C	B	A	A	B	A	C	B	C	A
Iso-octane	A	B	A	A	A	A	A	A	A		A	A
Isopropyl Alcohol	B	B	B	B	B	B	A	B	B		B	A
Isopropyl Ether	A	B	A	A	A	A	A	A	A			A
Jet Fuel	A	A	A	A	A	A	A	A	A		A	A
Kerosene	A	B	A	B	A	A	A	A	A	A	A	A
Ketchup	D	D	D	D	A	A	A	A	B		B	A
Ketones	A	A	A	A	A	A	A	A	A		A	A
Lacquers (and Solvents)	A	C	A	C	A	A	A	A	A		A	A
Lactic Acid (Dilute Cold)	A	D	D	D	B	A	B	A	C	B	A	A
Lactic Acid (Dilute Hot)	B	D	D	D	B	A	B	A	D	B	A	A
Lactic Acid (Conc. Cold)	C	D	D	D	B	A	B	A	D	B	A	A
Lactic Acid (Conc. Hot)	C	D	D	D	B	B	B	A	D	B	A	A
Lard Oil	A	C	A	C	A	A	A	A	B		A	A
Lead Acetate	D	D	C	D	B	B	B	B	B	B	B	A
Linoleic Acid	A	B	B	B	A	A	B	A	B			A
Linseed Oil	A	A	B	A	A	A	A	A	B	A	A	A
Liquefied Pet. Gas (LPG)	A	B	A	B	B	B	B	B	B			A
Magnesium Bisulfate	B	B	B	B	A	A	A	A	B			A
Magnesium Chloride	D	D	B	C	B	B	C	B	B	B	B	A
Magnesium Hydroxide	D	B	B	B	B	B	B	B	B	B	B	A
Magnesium Hydroxide (Hot)	D	B	D	B	B	B	B	B	B	B	B	A
Magnesium Sulfate	B	B	B	B	B	A	B	A	B	B	A	A
Maleic Acid	B	B	B	B	B	B	B	B	B	B	A	A
Malic Acid	B	D	B	D	A	A	A	A	B	A		A
Mayonnaise	D	D	D	D	A	A	A	A	B	A	B	A
Mercuric Chloride	D	D	D	D	B	B	D	B	C	C	B ^(C)	A
Mercuric Cyanide	D	D	D	D	B	B	B	B	B	A	B	A
Mercury	C	A	D	A	B	B	B	B	B	B	B	A
Methane	A	B	A	A	A	A	A	A	A	A	A	A
Methyl Acetate								B			A	A
Methyl Acetone	A	A	A	A	A	A	A	A	A			A
Methylamine	B	B	D	B	B	B	B	B	C			A
Methyl Cellosolve	A	B	A	B	A	A	B	A	B			A
Methyl Chloride (Dry)	D	B	A	B	B	A	A	A	B	B	B ^(C)	A
Methyl Ethyl Ketone	A	A	A	A	A	A	A	A	A		A	A
Methyl Formate	A	C	A	C	A	A	B	A	A			A
Methylene Chloride (Dry)	C	B	B	B	B	B	B	A	B	B	B	A
Milk	A	D	A	D	A	A	A	A	A	A	A	A
Mine Waters (Acid)	D	D	C	D	B	B	B	B	B	A	D	A

Corrosion Ratings:

A - Excellent

B - Good

C - Fair

D - Not Recommended

Blank - Insufficient Data

	Aluminum	Ductile Iron	Bronze	Carbon Steel	S.S. 304	S.S. 316	S.S. 17-4 PH	Alloy 20	Monel	Nickel	Hastelloy (B) (C)	FEP / PFA / PTFE
Mineral Spirits	A	B	B	B	B	B	B	B	B	A		A
Mixed Acids (Cold)	D	C	D	C	B	B	B	A	D	D		A
Molasses, Edible	A	A	A	A	A	A	A	A	A	A	A	A
Molasses, Crude	A	A	A	A	A	A	A	A	A	A	A	A
Muriatic Acid	D	D	D	D	D	D	D	D	B			A
Mustard	B	B	A	B	A	A	A	A	A			A
Naphtha	A	B	B	B	B	B	B	B	B	B	B	A
Naphthalene	B	B	B	A	B	B	A	B	B		B	A
Nickel Ammonium Sulfate	D	D	D	D					B			A
Nickel Chloride	D	D	D	D	B	B	B	B	B	C	A ^(B)	A
Nickel Nitrate	C	D	D	D	B	B	B	A	B	D	B	A
Nickel Sulfate	D	D	D	D	B	B	C	A	B	B	B	A
Nicotinic Acid												A
Nitric Acid (10%)	D	D	D	D	A	A	A	A	D	C	B ^(C)	A
Nitric Acid (30%)	D	D	D	D	A	A	A	A	D	C	D	A
Nitric Acid (80%)	B	D	D	D	A	A	B	A	D	C	B ^(C)	A
Nitric Acid (100%)	A	D	D	A	A	A	B	A	D	C	B ^(C)	A
Nitric Acid Anhydrous	B	A	D	A	A	A	B	A	D	D	D	A
Nitrobenzene	C	B	D	B	B	B	B	B	B	B	B	A
Nitrogen	A	A	A	A	A	A	A	A	A	A	A	A
Nitrous Acid (10%)	D	D	D	D	B	B	B	B	D	D	D	A
Nitrous Gases	B	C	D	B	A	A	A	A	D			A
Nitrous Oxide	C	C	D	B	B	B	B	B	D	D	D	A
Oils, Animal	A	A	A	A	A	A	A	A	A			A
Oil, Cottonseed	B	C	B	C	B	B	B	B	B			A
Oils, Fish	B	B	B	B	A	A	A	A	A			A
Oils, Fuel	A	B	B	B	A	A	A	A	A			A
Oils, Lube	A	A	B	A	A	A	A	A	B			A
Oils, Mineral	A	B	B	B	A	A	A	A	A			A
Oil, Petroleum (Refined)	A	B	B	A	A	A	A	A	A			A
Oil, Petroleum (Sour)	A	C	C	B	A	A	A	A	A			A
Oil-Water Mixtures	A	B	A	B	A	A	A	A				A
Oleic Acid	A	B	B	B	B	B	B	B	A	A	B	A
Oleum	B	D	D	B	B	B	B	B	D		B	A
Olive Oil	A	B	B	B	A	A	A	A	A			A
Oxalic Acid	C	D	B	D	B	B	D	B	B	C	B	A
Oxygen	A	B	A	B	A	A	A	A	A			A
Ozone (Wet)	B	C	B	C	A	A	A	A	A			A
Ozone (Dry)	A	A	A	A	A	A	A	A	A			A
Paints and Solvents	A	A	A	A	A	A	A	A	A			A

Corrosion Ratings:

A - Excellent

B - Good

C - Fair

D - Not Recommended

Blank - Insufficient Data

	Aluminum	Ductile Iron	Bronze	Carbon Steel	S.S. 304	S.S. 316	S.S. 17-4 PH	Alloy 20	Monel	Nickel	Hastelloy (B) (C)	FEP / PFA / PTFE
Palmic Acid	B	C	B	C	B	B	B	B	B	B	B	A
Palm Oil	A	C	B	C	B	B	B	A	A			A
Paraffin	A	B	A	B	A	A	A	A	A		A	A
Paraformaldehyde	B	B	B	B	B	B	B	B	B	B	B	A
Pentane	A	B	B	B	B	B	B	B	B	B	A	A
Perchlorethylene (Dry)	B	B	C	B	B	B	B	B	A	A		A
Petrolatum	B	C	B	C	B	B	B	B	A			A
Phenol (100%)	A	B	B	B	B	B	B	B	A	A	A	A
Phosphoric Acid (10%) Cold	D	D	D	D	B	B	B	B	B	B	A ^(B)	A
Phosphoric Acid (10%) Hot	D	D	D	D	B	B	D	B	B	C	A ^(B)	A
Phosphoric Acid (50%) Cold	D	D	D	D	B	B	B	B	B	C	A ^(B)	A
Phosphoric Acid (50%) Hot	D	D	D	D	B	B	D	B	B	C	B ^(B)	A
Phosphoric Acid (85%) Cold	D	D	D	D			B	B	A	B	B ^(B)	A
Phosphoric Acid (85%) Hot	D	C	D	C			D	B	B	D		A
Phthalic Acid	B	C	B	C	A	A	B	B	B	B	B	A
Phthalic Anhydride	B	C	B	C	B	B	B	B	A	A	A	A
Picric Acid	B	D	D	D	B	B	B	B	C	D	B ^(C)	A
Pine Oil	A	B	B	B	A	A	A	A	A			A
Pineapple Juice	A	C	C	C	A	A	B	A	A			A
Potassium Bisulfite	C	D	C	D	B	B	B	B	D	D	D	A
Potassium Bromide	C	D	C	D	B	B	B	B	B	B	A	A
Potassium Carbonate	C	B	B	B	B	B	B	B	B	A	B	A
Potassium Chlorate	C	B	B	B	B	B	B	B	C	C	B	A
Potassium Chloride	B	B	B	C	A	A	B	A	B	B	B	A
Potassium Cyanide	D	B	D	B	B	B	B	B	B	B	B	A
Potassium Dichromate	A	B	B	B	A	A	A	A	B	B	B	A
Potassium Diphosphate	B	A	B	A	A	A	A	A	B			A
Potassium Ferricyanide	B	B	C	B	B	B	B	B	B	B	B	A
Potassium Ferrocyanide	A	B	B	B	B	B	B	B	B	B	B	A
Potassium Hydroxide (Dilute Cold)	D	B	D	B	B	B	B	B	A	A	B	A
Potassium Hydroxide (Dilute Hot)	D	B	D	B	B	B	B	B	A	A	B	A
Potassium Hydroxide (to 70% Cold)	D	B	D	B	B	B	B	B	A	A	B	A
Potassium Hydroxide (to 70% Hot)	D	B	D	B	B	B	B	B	A	A	B	A
Potassium Iodide	C	C	B	C	B	B	B	B	B	B	B	A
Potassium Nitrate	A	B	B	B	B	B	B	B	B	B	B	A
Potassium Permanganate	A	B	B	B	B	B	B	B	B	B	A	A
Potassium Sulfate	B	C	B	B	B	B	B	B	B	B	B	A
Potassium Sulfide	D	D	D	D	B	B	B	B	D	B	B	A
Potassium Sulfite	B	D	D	D	B	B	B	B	D	D		A
Producer Gas	B	B	B	B	B	B	B	B	A	A		A

Corrosion Ratings:

A - Excellent

B - Good

C - Fair

D - Not Recommended

Blank - Insufficient Data

	Aluminum	Ductile Iron	Bronze	Carbon Steel	S.S. 304	S.S. 316	S.S. 17-4 PH	Alloy 20	Monel	Nickel	Hastelloy (B) (C)	FEP / PFA / PTFE
Propane	A	A		A	A	A	A	A	A	A	A	A
Propyl Alcohol	A	B	A	B	A	A	A	A	A			A
Propylene Glycol	A	B	B	B	B	B	B	B	B			A
Pyrogallic Acid	B	B	B	B	B	B	B	B	B	B	A	A
Quench Oil	A	B	B	B	A	A	A	A				A
Resins and Rosins	B	C	B	C	B	B	B	B	A	A		A
Road Tar	A	A	A	A	A	A	A	A	A			A
Roof Pitch		A	A	A	A	A	A	A	A			A
Rubber Latex Emulsions	A	B	A	B	A	A	A	A				A
Rubber Solvent	A	A	A	A	A	A	A	A	A			A
Salad Oil	B	C	B	C	B	B	B	B	B		A	A
Salicylic Acid	C	D	C	D	A	A	A	A	A	A	A	A
Salt	B	C	B	C	B	B	B	B	A			A
Sea Water	C	D	C	D	B	B	B	B	A		A ^(C)	A
Shellac (Bleached)	A	B	A	A	A	A	A	A	A			A
Shellac (Orange)	A	B	A	A	A	A	A	A	A			A
Silver Nitrate	D	D	D	D	B	A	B	A	D	B	A	A
Soap Solutions (Stearates)	C	A	A	A	A	A	A	A	A	A		A
Sodium Acetate	A	B	B	B	B	B	B	B	B	B	B	A
Sodium Aluminate	C	C	B	C	B	A	B	B	A	B	B	A
Sodium Bicarbonate	B	C	B	C	B	B	B	A	B	B	B	A
Sodium Bisulfate (10%)	D	D	B	D	B	A	B	A	B	B	B ^(B)	A
Sodium Bisulfite (10%)	D	D	B	D	B	B	D	B	B		B ^(C)	A
Sodium Borate	B	C	B	C	B	B	D	B	B		B	A
Sodium Bromide (10%)	B	D	B	C	B	B	B	B	B	B	A	A
Sodium Carbonate	D	B	B	B	B	B	B	A	B	B	B	A
Sodium Chlorate	B	C	B	C	B	B	B	B	B			A
Sodium Chloride	B	C	B	C	B	B	B	B	A	A	B	A
Sodium Chromate	D	B	C	B	B	B	B	B	B	B	B	A
Sodium Cyanide	D	B	D	A	A	A	A	A	B	C	B	A
Sodium Fluoride	C	D	C	B	B	B	B	B	B	D	B	A
Sodium Hydroxide (Cold) 20%	D	A	A	A	A	A	A	A	A	A	A ^(B)	A
Sodium Hydroxide (Hot) 20%	D	B	B	B	A	A	B	A	A	A	A ^(B)	A
Sodium Hydroxide (Cold) 50%	D	A	A	A	A	A	B	A	A	A	A ^(B)	A
Sodium Hydroxide (Hot) 50%	D	B	A	B	A	A	B	A	A	A	A ^(B)	A
Sodium Hydroxide (Cold) 70%	D		D	D	B	B	B	B	A	A	A ^(B)	A
Sodium Hydroxide (Hot) 70%	D		D	D	B	B	C	B	A	A	A ^(B)	A
Sodium Hypochloride	D	D	D	D	D	D	D	D	D	D	A	A
Sodium Metaphosphate	D	B	C	B	B	B	B	B	B	A		A
Sodium Metasilicate (Cold)	B	C	B	C	A	A	A	A	A	A	A	A

Corrosion Ratings:

A - Excellent

B - Good

C - Fair

D - Not Recommended

Blank - Insufficient Data

	Aluminum	Ductile Iron	Bronze	Carbon Steel	S.S. 304	S.S. 316	S.S. 17-4 PH	Alloy 20	Monel	Nickel	Hastelloy (B) (C)	FEP / PFA / PTFE
Sodium Metasilicate (Hot)	B	D	B	D	A	A	A	A	A	A	A	A
Sodium Nitrate	A	B	B	B	A	A	B	A	B	B	A ^(C)	A
Sodium Perborate	B	B	B	B	B	B	B	B	B	B	B	A
Sodium Peroxide	C	C	D	C	B	B	B	B	B	B	B	A
Sodium Phosphate (Dibasic)	D	B	B	B	B	B	B	B	B	B	B	A
Sodium Phosphate (Tribasic)	D	B	B	B	B	B	B	B	B	B	B	A
Sodium Silicate	B	B	B	B	B	B	B	B	B	B	B	A
Sodium Silicate (Hot)	C	B	B	B	B	B	B	B	B	B	B	A
Sodium Sulfate	A	B	B	B	B	A	B	A	B	B	B	A
Sodium Sulfide	C	B	D	B	B	B	B	B	B	B	B	A
Sodium Sulfide (Hot)	D	C	D	C	B	B	B	B	B	B	B	A
Sodium Thiosulfate	A	B	B	B	B	B	B	B	B			A
Soybean Oil	B	C	B	C	A	A	A	A	A		A	A
Stannic Chloride	D	D	C	D	D	D	D	D	D	D	B	A
Stannous Chloride	D	D	D	D	D	A	C	A	C	B	B	A
Starch	A	A	B	A	A	A	A	A	A			A
Stearic Acid	B	C	C	C	B	B	B	B	B	B	A	A
Stoddard Solvent	A	B	B	B	B	B	B	B	B			A
Styrene	A	B	A	A	A	A	A	A	A			A
Sugar Liquids	A	B	A	B	A	A	B	A	A	A	A	A
Sulfate, Black Liquor	D	B	D	B	B	A	B	B	B	D	A	A
Sulfate, Green Liquor	D	B	D	B	B	A	B	B	B	B	B	A
Sulfate, White Liquor	B	C	C	C	B	A	C	B	C		B	A
Sulphur	A	A	D	A	A	A	A	A	A	A	A ^(C)	A
Sulphur Dioxide (Dry)	B	B	B	B	B	B	C	B	B	B	A ^(C)	A
Sulfuric Trioxide (Dry)	C	B	B	B	B	B	B	B	B	B	B	A
Sulfuric Acid (0-7%)	B	D	C	D	C	B	C	A	A	D	A ^(B)	A
Sulfuric Acid (20%)	D	D	C	D	D	D	D	A	B	D	A ^(B)	A
Sulfuric Acid (50%)	D	D	C	D	D	D	D	A	B	D	B	A
Sulfuric Acid (100%)	D	B	C	B	B	B	D	A	D	D	B ^(B)	A
Sulfurous Acid	C	D	C	D	B	B	D	B	D	C	A ^(C)	A
Synthesis Gas	B	B	B	B	B	B	B	B	A	A		A
Tall Oil	D	B	B	B	B	B	B	B	B	B	A	A
Tannic Acid	C	C	B	C	B	B	B	B	B	B	B	A
Tartaric Acid	B	D	C	D	B	A	B	B	B	B	B	A
Tetraethyl Lead	B	C	B	C	B	B	B	B	A			A
Toluene or Toluol	A	A	A	A	A	A	A	A	A	A	A	A
Tomato Juice	A	C	C	C	A	A	A	A	A	A	A	A
Transformer Oil	A	B	B	A	A	A	A	A	A	A	A	A
Tributyl Phosphate	A	A	A	A	A	A	A	A	A	A	A	A

Corrosion Ratings:

- A - Excellent
- B - Good
- C - Fair
- D - Not Recommended
- Blank - Insufficient Data

	Aluminum	Ductile Iron	Bronze	Carbon Steel	S.S. 304	S.S. 316	S.S. 17-4 PH	Alloy 20	Monel	Nickel	Hastelloy (B) (C)	FEP/PFA/PTFE
Trichloroethylene	A	C	B	B	B	B	B	B	A	A	A	A
Tung Oil	B	B	B	B	A	A	B	A	C			A
Turpentine	A	B	B	B	A	A	A	A	B	A	A	A
Urea	B	C	B	C	B	B	B	B	B	B	B	A
Varnish	A	C	A	C	A	A	A	A	A	A	A	A
Vegetable Oil, Edible	A	B	B	B	A	A	A	A	B	A	B	A
Vegetable Oil, Non-edible	A	B	B	B	A	A	A	A	B	A	B	A
Vinegar	C	D	B	D	A	A	A	A	A	A	A	A
Water, Distilled (Aerated)	A	D	A	D	A	A	A	A	A	A	A	A
Water, Fresh	A	C	A	C	A	A	A	A	A	A	A	A
Water, Sea	B	D	B	D	A	A	B	A	A	A	A	A
Wax Emulsions	A	B	A	A	A	A	A	A	A	A	A	A
Whiskey and Wine	D	D	A	D	A	A	A	A	A	A	A	A
Xylene (Dry)	A	A	A	A	A	A	A	A	A	A		A
Zinc Chloride	D	C	D	D	D	D	D	A	B	B	B ^(B)	A
Zinc Hydrosulfite	D	B	C	B	A	A	A	A	B	B	B	A
Zinc Sulfate	D	D	B	D	A	A	B	A	B	B	B	A

Product responsibility.

Xomox's concern for product performance extends to the product's period of service. We feel it is important for users to also be aware of their responsibilities. Our products are manufactured and used in numerous applications with a wide variety of service conditions. While general guidelines are often furnished, it obviously is not possible to provide complete and specific performance data for every conceivable service condition. Therefore, the end user must assume final

responsibility for proper evaluation, application and performance of all products. The contents of this document are presented for information purposes only. Every effort has been made to ensure accuracy. This information is not intended to be construed as warranties or guarantees, expressed or implied, nor imply use applicability, for products or services described herein. We reserve the right to modify or improve the designs and specifications of such products at any time

without notice. As the manufacturer, Tufline sells its products and services pursuant to its standard terms and conditions of sale, including its limited warranty, copies of which are available upon request. Tufline limits its liability specifically to the replacement or repair of defective items, or to a refund for same. Tufline does not accept liability for any incidental or consequential damages.

Global Capabilities For Global Customers



Worldwide capabilities.

No matter where in the world you are, Xomox technical support and services are available from:

- 16 Manufacturing Facilities
- 18 Service Centers
- 50 Sales Offices
- More than 200 Xomox Authorized Distributors

Product selection.

Xomox offers the broadest line of process valves, actuators, accessories, and related services including:

- Tufline® Process Valves
- Saunders Diaphragm Valves
- Matryx® Rack & Pinion, Vane Actuators
- Xomox XRP™ Actuators

Global locator.

For a listing of Xomox Manufacturing Facilities, Service Centers, Regional Offices, and Authorized Distributors, visit our web site www.xomox.com.

Xomox literature.

All Xomox catalogs and technical data are available as PDF files at www.xomox.com.

Phone support.

Call your nearest Xomox Sales Office or the Xomox World Headquarters:
Phone: 513-745-6000
Fax: 513-745-6093



a Crane Co. Company

Corporate strength.

Xomox is a Crane Co. company. Through the Crane Co. association, Xomox offers even greater global capabilities and breadth of product lines.

Xomox Corporation

World Headquarters
4444 Cooper Road
Cincinnati, Ohio 45242

XOMOX[®]
Process Valves & Actuators